

Greater Understanding_

The cybersecurity unit for large enterprises_

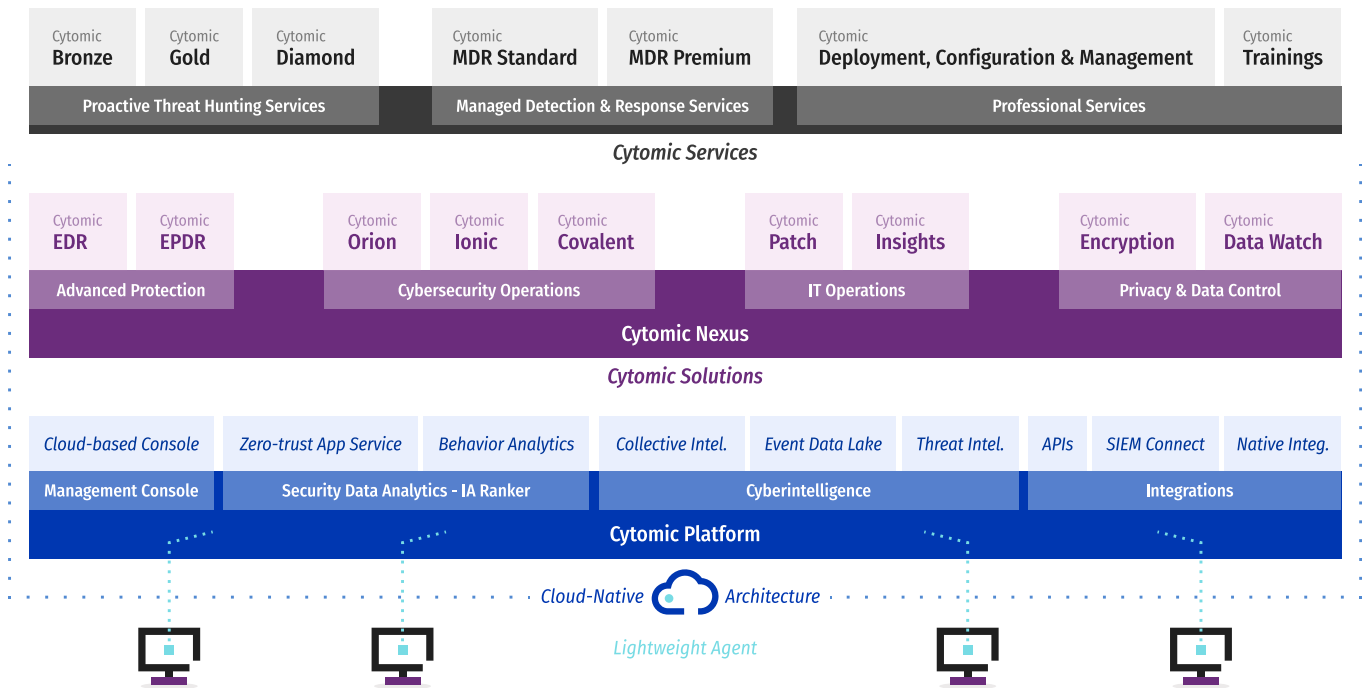
Cytomic was born to cover the cybersecurity needs that are specific to large corporations.

Because knowing what companies need, is the only way that we can offer them the perfect combination of solutions and services.

Cytomic is a new business unit that completes the Panda Security's specialization in the enterprise segment, after five years offering innovative cybersecurity technology to this type of customer.

The main differentiator of this new business unit on the market are based around layers of service, which provide its customers with the additional value of technology-service duality.

Solutions and Services_

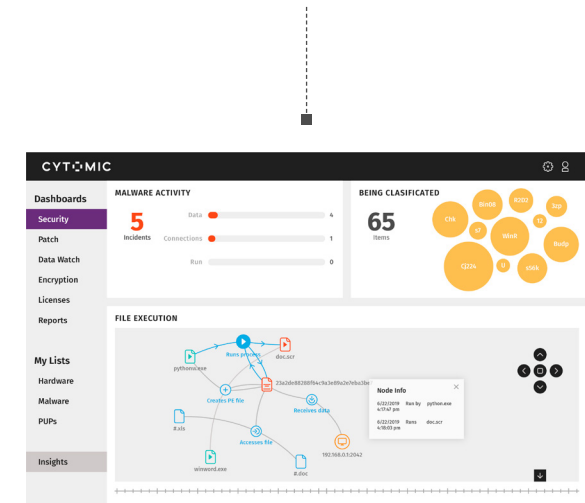


Advanced Endpoint Protection_

Cytomic EDR

It efficiently detects and responds to any kind of unknown malware and fileless and malwareless attacks, **which traditional solutions can't detect**.

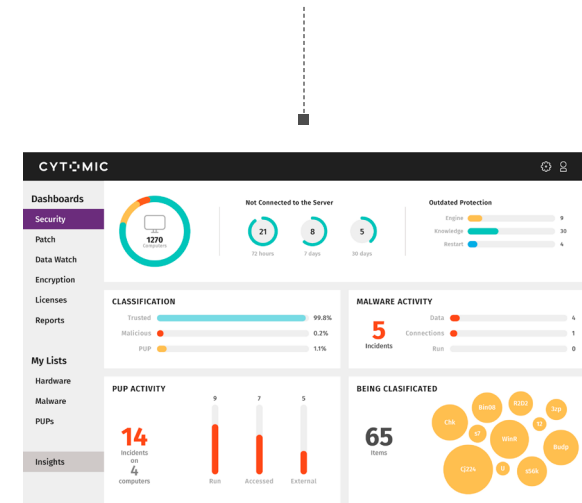
It is based on the unique **Cytomic Zero-Trust Application Service***, which simply stops any binary from running until it can be classified as trustworthy.



Cytomic EPDR

It combines a full stack of preventive endpoint technologies in a single solution, with EDR capacities and the **Zero-Trust Application Service**.

It extends prevention, detection and response capabilities with a full range of endpoint protection capacities to stop threats from making their way onto devices and servers, reducing their attack surface.



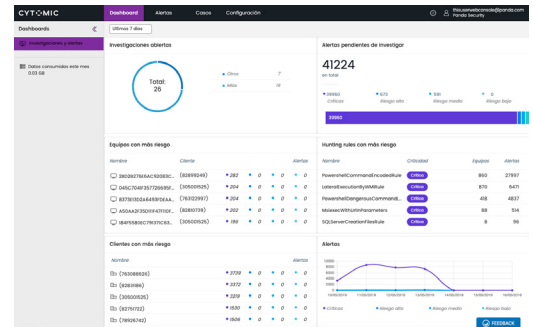
*The Zero-Trust App Service classifies any unknown applications without end user intervention with an SLA of classification in less than 24 hours 24/7 365d.

Cybersecurity Operations_

Cytomic Orion

It accelerates Threat Hunting, detection and response within your organization.

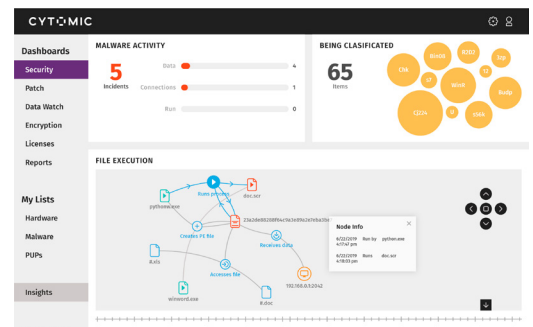
Automate the search for malwareless threats, alert triage, and investigation thanks to the application of event analysis and scalable threat intelligence.



Cytomic Ionic

It allows SOC's to become more efficient and scalable, by leveraging the Zero-Trust App Service to filter out attacks based on unknown binaries.

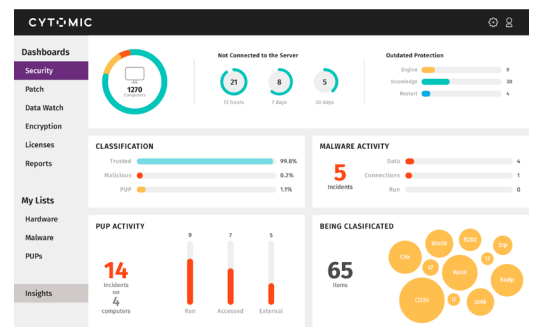
In Cytomic Ionic, the number of incidents to manage is significantly lower than when using any other EDR solutions that don't filter out all unknown applications exhibiting malicious activity.



Cytomic Covalent

It extends Cytomic Ionic with a full range of Endpoint Protection capabilities to prevent threats from reaching the endpoint and to reduce the attack surface.

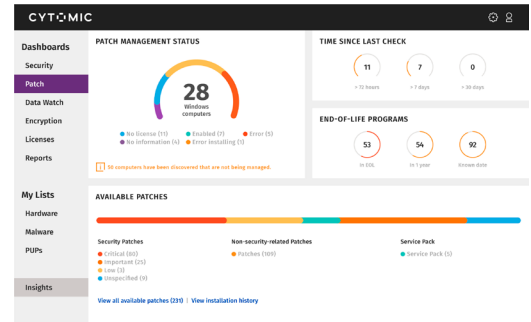
This allows SOC's to become more efficient and scalable: they can leverage an integrated EPP and EDR architecture, the Zero-Trust App Service to filter out attacks based on unknown binaries.



IT Operations, Privacy and Data Control

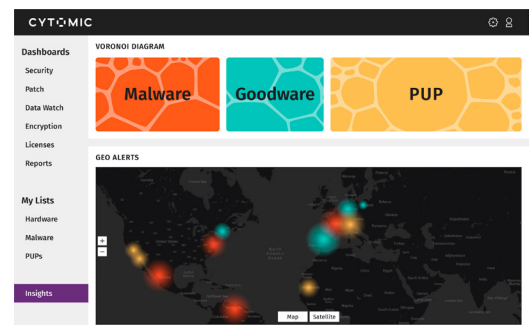
Cytoomic Patch

Provides vulnerability assessment and patch management for Windows operating systems and third-party applications on workstations, laptops and servers; Hardening the attack surface and prevent threats from reaching the endpoints.



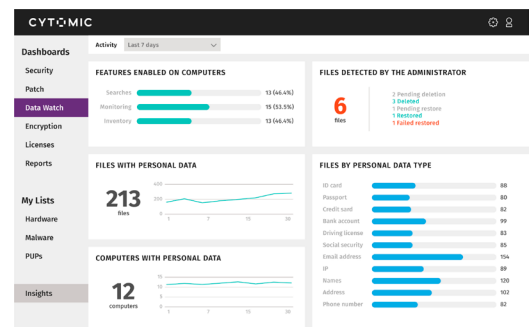
Cytoomic Insights

Cytoomic Insights aggregates all the data gathered, correlating and graphically presenting it in real time to offer granular visibility into any event that takes place on the network.



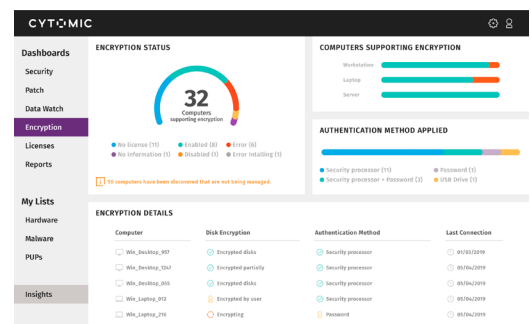
Cytoomic Data Watch

Designed to assist organizations in data protection regulation compliance. It also discovers and protects personal and sensitive data, both in real time and throughout its lifecycle on endpoints and servers.



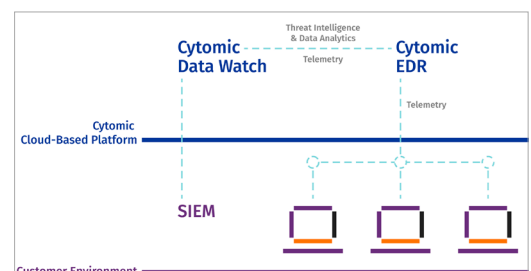
Cytoomic Encryption

Cytoomic Encryption leverages BitLocker, a proven and stable Microsoft technology, to encrypt and decrypt disks without impacting end users.



Cytoomic SIEM Connect

Cytoomic enriched telemetry, with our own Threat Intelligence, is seamlessly integrated within existing corporate SIEM solutions without additional deployments on users' devices, thanks to Cytoomic SIEM Connect.



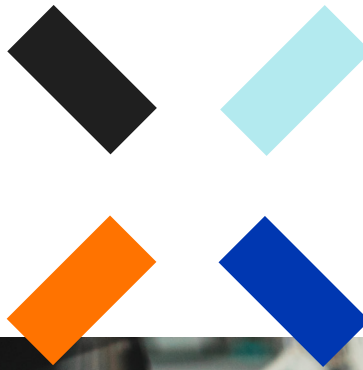


Threat Hunting Services_

We identify hidden adversaries and notify you of their suspicious activity.

Experienced threat hunters proactively **detect abnormal behavior and spot hidden threat actors** that have evaded any existing controls with living-off-the-land techniques.

Our team of experts immediately **notifies you of those abnormal behaviors so that you can confirm and quickly react** if you are under attack, with the peace of mind that comes from being supervised by our Global Cybersecurity Team.



MDR Services_

Active anticipation, hunting, and incident response.

The service provides you with techniques, tools, and experts, all of which will function as **an extension of your own security team**. This way, you can enjoy comprehensive coverage when you define your protection strategies and activate your defensive, offensive, and remediation measures.



Certifications and Validations_



Common Criteria EAL2+

Information Technology Security Evaluation



High “ENS” Classification

Spanish National Security Framework



Qualified IT Security Product

Spanish Cryptology Center



“Best Endpoint Detection and Response Solution of 2019
as reviewed by customers”

Customers' Choice - Jan 19

Your data only belongs to you_

Your data resides in the European Union

Cytomic is committed to keeping your data safe.

That's why we innovate to protect your devices, your users, your information and your privacy. To do so, we use the most secure servers to manage your company's data.

Our servers are located in Europe, and operate under the European Union Regulations and the strictest security standards.



GDPR
COMPLIANT



CYTOMIC

cytomic.ai
.artificialintelligence

Let's talk_
sales@cytomic.ai
+34 900 840 407

